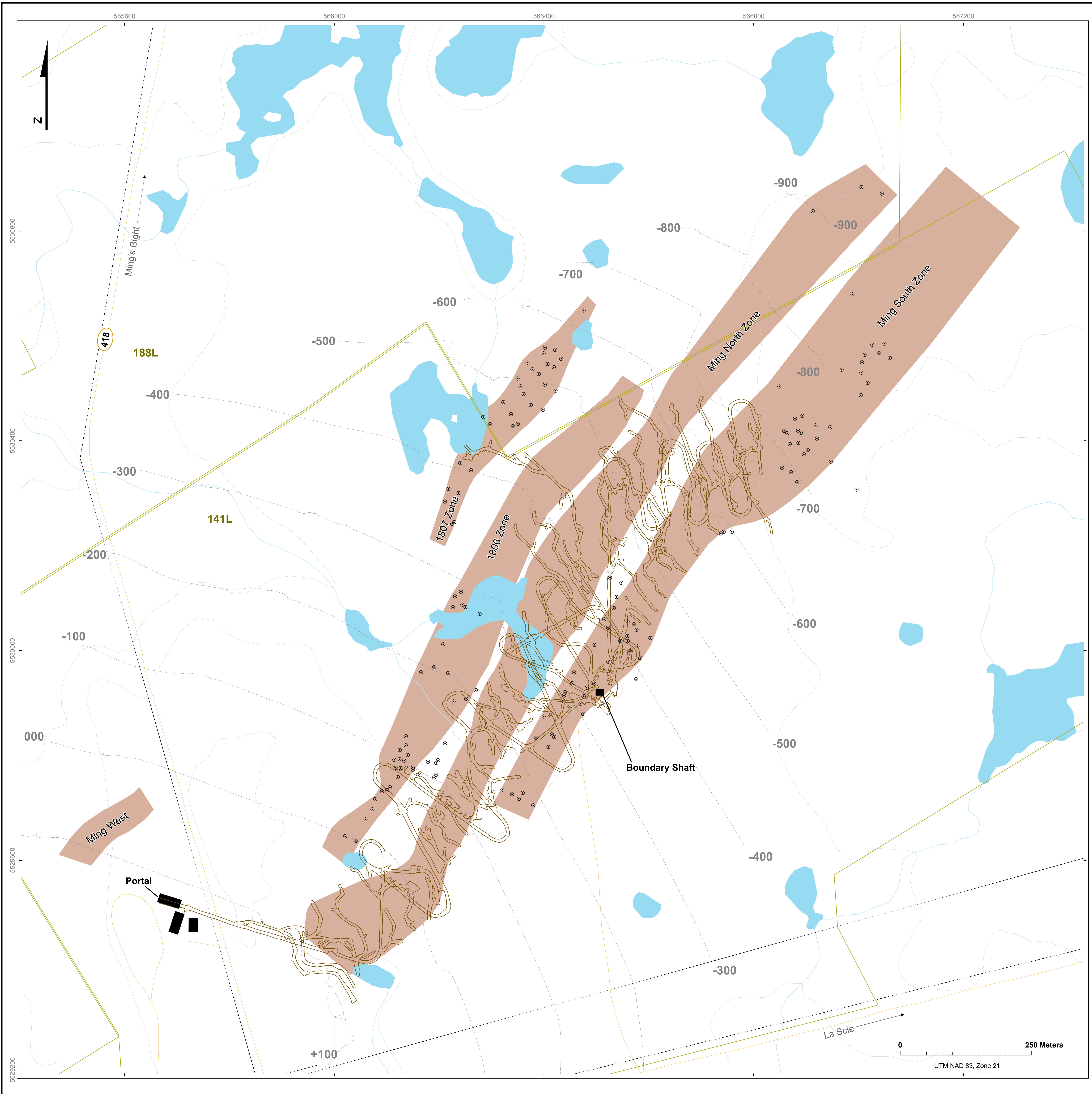


**Ming Horizon Pierce Points
 Surface and Underground
 Diamond Drilling 2003-2009**



Typical Ming Massive Sulphide Mineralization (NQ Core)



-  **Ming Horizon Pierce Points**
-  **Mining Lease Boundary**
-  **Ming Horizon Contours (m)**
-  **Topographic Contours**
-  **Roads**
-  **Powerline**
-  **Rambler Mine Workings**
-  **Lakes**
-  **Rivers**
-  **Ming Massive Sulphide**
-  **Shaft and Buildings**

0 250 Meters
 UTM NAD 83, Zone 21